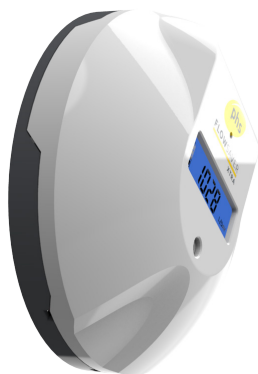


FLOWSAVER XTRA, an intelligent urinal water management system

> Introducing the next generation of flow saver technology, working to reduce water wastage without compromising on hygiene.



The **FLOWSAVER XTRA** is an advanced water saving device for use in washrooms. It uses innovative technology to prevent unnecessary, and wasteful, urinal flushing. This will help your business reduce the costs of your water bills while also having a positive environmental impact.

Key features:

Displays live information in your washroom, including water saving stats and flush frequency.

Fully programmable control unit provides optimum flush water control.

Flow sensor technology measures water flow and provides more efficient water savings.

Intelligent Operation

The **FLOWSAVER XTRA** uses flow sensor technology to accurately measure the correct amount of water required for urinal flushing.

It uses an infrared sensor to detect movement in the washroom, allowing the device to control flush frequency via the solenoid valve.

Flush Frequency

The **FLOWSAVER XTRA** can be programmed to suit every washroom situation. As it controls water use based on washroom traffic.

If no washroom traffic is detected for 2 hours, the **FLOWSAVER XTRA** will initiate a hygiene flush to ensure there is no waste left in the pipes.

LCD screen displays:

- Motion detected
- Time to next flush
- Average daily number of flushes
- Average daily volume of water used / saved
- Battery level

Urinal and WC services

Fully serviced

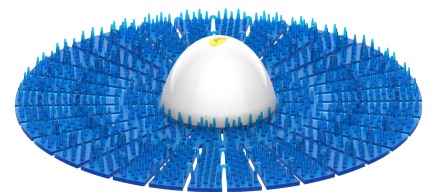
The **FLOWSAVER XTRA** is a fully serviced unit, with **phs** ensuring that it is always fully functioning and saving you water without any input from your staff. Our team of skilled, qualified installation engineers, install and ensure the control unit, flow sensor and solenoid valve are all correctly set.

Product specifications

Dimensions	161mm x 154mm x 50mm
Operation	Battery Operated
Construction	Strong and durable ABS plastic construction
Colours	White

The perfect partnership

The **ECOSHIELD** removes blockages and keeps urinal traps and pipe work clear, enhancing the washroom appearance and improving its environment for staff, visitors and customers.



For best results

phs recommends using the **FLOWSAVER URINAL** water management system in conjunction with the **phs ECOSHIELD**, **AUTOSAN** and **MICRAKLEEN** for maximum hygiene results.



ECOFLOW

The **ECOFLOW** uses innovative Diamond Flow Cell technology to convert ordinary tap water into powerful Ozonated water. Ozonated Water is a natural, chemical free liquid that breaks down and kills bacteria, pathogens and viruses. It also removes odours and leaves pipes free of limescale.



AUTOSAN

The **AUTOSAN** dispenses sanitiser directly into the cistern to help create a consistently hygienic wash through the urinal, helping to inhibit the build-up of bacteria in the trough.



MICRAKLEEN

MICRAKLEEN won't damage the bacteria balance. It is extremely versatile and can be used on all surfaces across the washroom, including diluted on floors and tiles.

For further information please contact us on :

United Kingdom : 029 2080 9098 | productinfo@phs.co.uk | phs.co.uk

Republic of Ireland : 01 643 4680 | productinfo@phs.co.uk | phs.co.uk

